



SSD1612

16.4" Resizing LCD, 500 nits LED backlight, 1366x256 ultra wide aspect ratio 16:3

SSD1612 is an innovative ultra-wide, sunlight readable, LED backlight LCD display. It provides LCD panel with specific ratios for digital signage, public transportation, exhibition hall, department store, vending machine and industrial applications. Incorporating with A.D. control board and backlight design, it is high brightness and sunlight readable panel, can display high-quality video with energy-efficient.

Key Features

- Resizing LCD
- Ultra Wide Screen (16 : 3)
- Sunlight Readable
- LED Backlight
- High Brightness 500 nits
- Low Power Consumption
- High Uniformity (90%)
- Wide Dimming
- Life Expectancy (70,000hrs)
- Slim Bezel



Specifications

V1

Model No.	SSD1612
Description	16.4" Resizing LCD, 500 nits LED backlight, 1366x256
Display Area	409.8 x 76.8 mm
Brightness	500 cd/m ²
Resolution	1366 x 256
Aspect Ratio	16 : 3
Contrast Ratio	1000:1
Pixel Pitch (mm)	0.3 x 0.3
Viewing Angle	170°(H), 160°(V)
Display Colors	16.7M
Response Time (Typical)	3.7 ms
Sync	LVDS
Power Consumption	16W
Dimensions (mm)	432.9 x 103.5 x 40
Certification	CE/FCC
Weight (Net)	1.41kg
LED Driving Board	LID16
Control Board (Optional)	AD5621GA
<input type="checkbox"/> AD5621GA	VGA + Audio
<input type="checkbox"/> Others	
F / R Control Button	5 Key / 4 Key
<input type="checkbox"/> 4 Key	Power Switch, Menu, Select (+,-),
<input type="checkbox"/> 5 Key	Power Switch, Menu, Select (+,-), Auto
OSD Menu	Brightness, Contrast, H/V Position, Color, Phase, Clock...
Optional	<input type="checkbox"/> Touch Screen

Specifications are subject to change without notice.

All brands or product names are trademarks or registered trademarks of their respective companies.

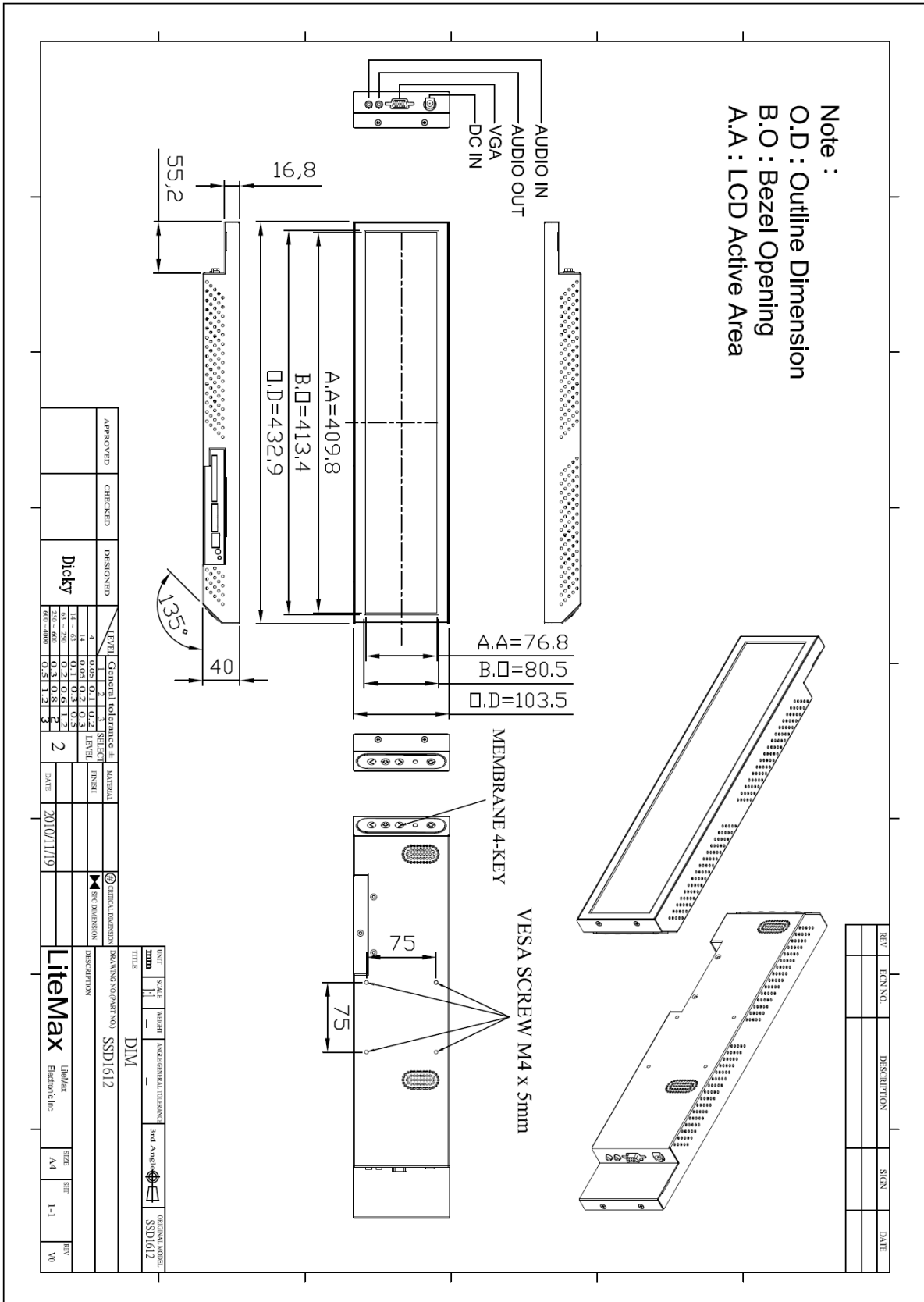
SSD = Panel + LED Driving Board + Control Board



Mechanical Drawing

Outline Dimensions

Unit: mm





Ordering Information

Model Name	Description
SSD1612-ENB-A01	16.4",500nits,1366*256,LID16.AD5621GA,O/B,DC 12V input.V1

Optional Accessories

Part Number	Description
840612051103	ADAPTER,12V,5A,60W.KPA-060F,DC Plug,2.1*5.5mm.P
810618301010 (Optional)	CABLE.POWER.AC.1830mm.(US Type).3PIN PLUG TO SOCKET.SVT(SPT-2)18AWG 3C BLACK.P.
810618301090 (Optional)	CABLE,POWER,AC,1830mm.(EU Type) 3PIN PLUG TO.SOCKET,H05VV-F 3G.0.75MMSQ BLACK,P
810618301050 (Optional)	CABLE,POWER,AC,1830mm.UK(FUSE) 3PIN PLUG TO.SOCKET,H05VV-F 3C(3G) 0.75MMSQ BLACK,P
810618301170 (Optional)	CABLE.POWER,AC,1830mm. (AU Type) 3PIN PLUG TO 2P SOCKET.LTSA 0.75MMSQ BLACK,P
810618301030 (Optional)	CABLE.POWER.AC.1830mm.(JP Type).2PIN PLUG Y TERMINAL TO. SOCKET.VCTF 3C 0.75MMSQ BLACK,P