



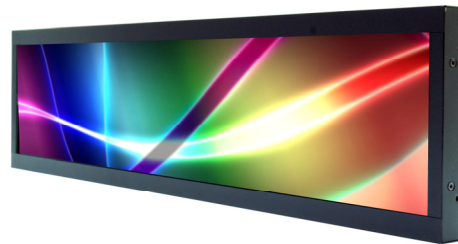
## SSD1922

### 19"Resizing LCD Display, Brightness is 500 nits, LED backlight, 1920x388 ultra wide aspect ratio 16:3.2

SSD1922 is an innovative ultra-wide, LED backlight LCD display. It provides LCD panel with specific ratios for digital signage, public transportation, exhibition hall, department store, vending machine and industrial applications.

#### Key Features

- Resizing LCD
- Ultra Wide Screen (16 : 3.2)
- LED Backlight
- High Brightness 500nits
- Low Power Consumption
- Wide Viewing Angle
- High Uniformity
- Wide Dimming



### Specifications

Preliminary

|                                      |  |
|--------------------------------------|--|
| <b>Model No.</b>                     | <b>SSD1922</b>   |
| <b>Description</b>                   | 19" Resizing LCD Display, 500nits, LED backlight, 1920x388         |
| <b>Display Area</b>                  | 476.6x 96.3 mm   |
| <b>Brightness</b>                    | 500nits  |
| <b>Resolution</b>                    | 1920 x 388   |
| <b>Aspect Ratio</b>                  | 16 : 3.2   |
| <b>Contrast Ratio</b>                | 3700:1   |
| <b>Pixel Pitch (mm)</b>              | 0.248 x 0.248  |
| <b>Viewing Angle</b>                 | 178°(H), 178°(V)   |
| <b>Display Colors</b>                | 16.7M  |
| <b>Response Time (Typical)</b>       | 16 ms  |
| <b>Power Consumption</b>             | 22.5W  |
| <b>Dimensions (mm)</b>               | 497.7x125.2x46.5mm   |
| <b>Weight (Net)</b>                  | 2.2Kg  |
| <b>LED Driving Board</b>             | LID21A06   |
| <b>Control Board (Optional)</b>      | <input type="checkbox"/> AD2662GD                                  |
| <input type="checkbox"/> AD2662GDVAR | VGA+DVI (Optional S-Video/ Component / Audio)                      |
| <b>F / R Control Button</b>          | <input type="checkbox"/> 5 Key <input type="checkbox"/> 4 Key      |
| <input type="checkbox"/> 5 Key       | Power Switch, Menu, Select (+,-), Auto                             |
| <input type="checkbox"/> 4 Key       | Power Switch, Menu, Select (+,-),                                  |
| <b>OSD Menu</b>                      | Brightness, Contrast, H/V Position, Color, Phase, Clock...         |
| <b>Optional</b>                      | <input type="checkbox"/> AOT <input type="checkbox"/> Touch Screen |

Specifications are subject to change without notice.

All brands or product names are trademarks or registered trademarks of their respective companies.

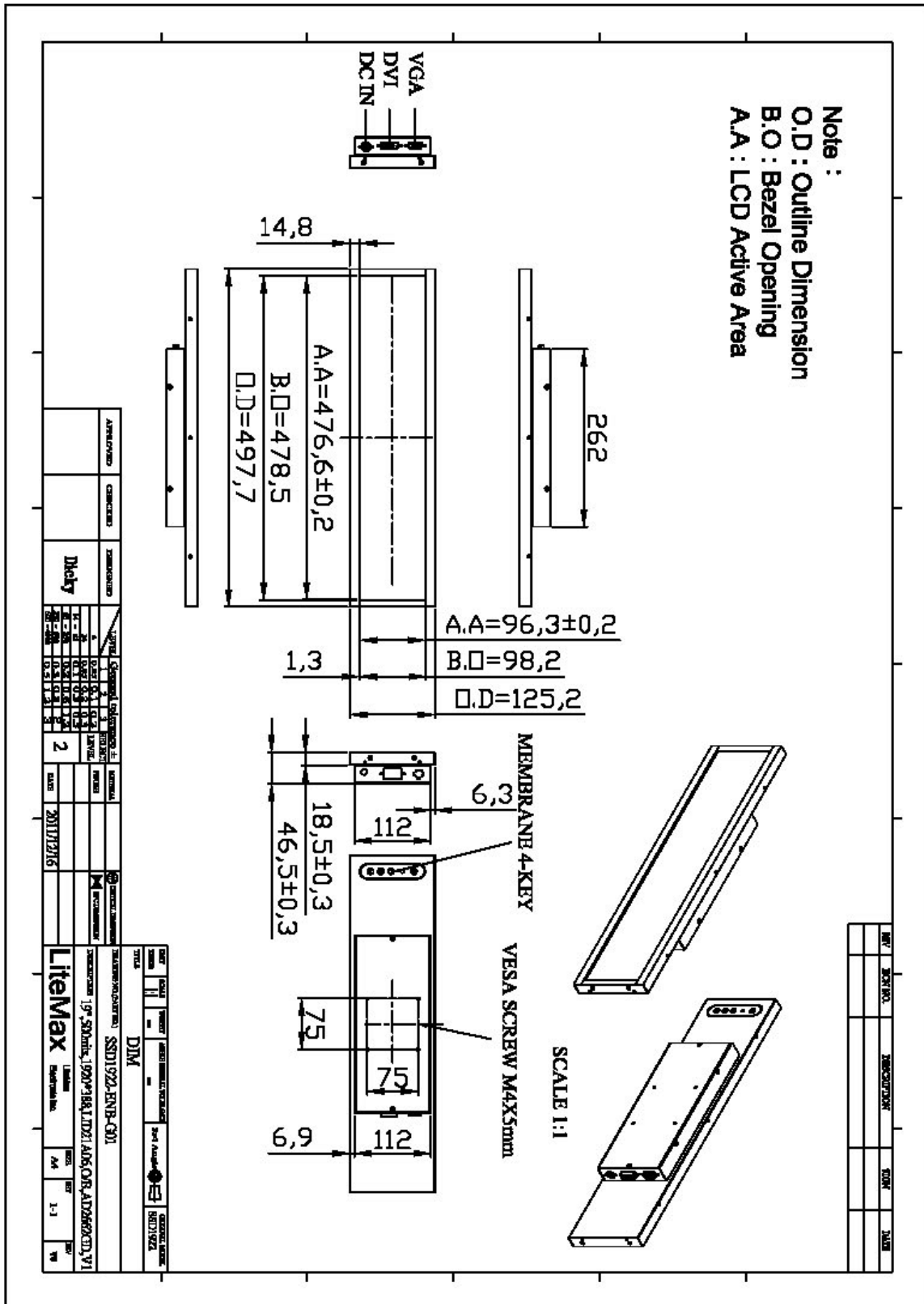
**SSD** = Panel+ LED Driving Board + Control Board + Housing



## Mechanical Drawing

### Panel Outline Dimensions

Unit: mm



|          |         |          |      |     |    |            |    |
|----------|---------|----------|------|-----|----|------------|----|
| APPROVED | CHECKED | DESIGNED | DATE | REV | BY | DATE       | BY |
|          |         | Dhaly    |      | 2   |    | 2011/12/16 |    |

| NO | REVISION | DESCRIPTION | DATE |
|----|----------|-------------|------|
|    |          |             |      |

|   |     |   |  |
|---|-----|---|--|
| <b>DIM</b><br>DIMENSIONS (mm) : S501922-ENVB-G01<br>DIMENSIONS (mm) : 19" S000016-1920*918-L1D21-AD06-08-AD268282D-V1 |     | 19" S000016-1920*918-L1D21-AD06-08-AD268282D-V1<br>19" S000016-1920*918-L1D21-AD06-08-AD268282D-V1<br>19" S000016-1920*918-L1D21-AD06-08-AD268282D-V1 |  |
| SCALE   | 1:1 | DATE  |  |



### Ordering Information

| Part Number     | Description   |
|-----------------|---|
| SSD1922-ENB-G01 | 19",500nits,1920*388,LID21A06,O/B,AD2662GD,DC 12V,V01 |
|                 |   |
|                 |   |

### Optional Accessories

| Part Number  | Description   |
|--------------|---|
| 840612051210 | ADAPTER,AC/DC,12V/5.4A,65W,Atech OEM A065112-TDx,4P SLIDING CAP,P |
| 810618301010 | CABLE.POWER.AC.1830mm USA type                                    |
| 810618301090 | CABLE,POWER,AC,1830mm Europe type                                 |
| 810618301050 | CABLE.POWER.AC.1830mm UK type                                     |
| 810618301170 | CABLE.POWER,AC,1830mm Australia type                              |
| 810618301030 | CABLE.POWER.AC.1830mm Japan type                                  |