



SSF_SSH1922 V2

19" Resizing LCD Monitor, Brightness is 400 nits, LED backlight, 1920x388 ultra wide aspect ratio 16:3.2

SSF_SSH1922 V2 is an innovative ultra-wide, LED backlight LCD monitor. It provides LCD panel with specific ratios for digital signage, public transportation, exhibition hall, department store, and vending machine applications.

Key Features

- Resizing LCD
- Ultra Wide Screen (16 : 3.2)
- LED Backlight
- High Brightness 400nits
- Wide Viewing Angle
- High Resolution
- Wide Dimming



Specifications

V1

Model No.	SSF1922 V2	SSH1922 V2
Description	19" Resizing LCD Monitor, 400nits, LED backlight, 1920x388	
Display Area (mm)	476.64 x 96.3 mm	
Brightness	400nits	
Resolution	1920 x 388	
Aspect Ratio	16 : 3.2	
Contrast Ratio	3000 : 1	
Pixel Pitch (mm)	0.248(H) x 0.248(V)	
Pixel Pre Inch (PPI)	103	
Viewing Angle	178°(H), 178°(V)	
Color Saturation (NTSC)	83%	
Display Colors	16.7M	
Response Time (Typical)	25 ms	
Sync	LVDS	
Operating Temperature	0°C ~ 50°C	
Storage Temperature	-20°C ~ 60°C	
Power Consumption	16W / 22.2W	
Dimensions (mm)	495.6 x 121.3 x 12.4 mm	
Weight (Net)	1.2Kg	
LED Driving Board	LID21A	
Control Board (Optional)	<input type="checkbox"/> AD2662GDVAR <input type="checkbox"/> AD2662GDHM	
<input type="checkbox"/> AD2662GDVAR	VGA+DVI (Optional S-Video/ Component / Audio)	
<input type="checkbox"/> AD2662GDHM	VGA+DVI+HDMI	
Rear Control Button	<input type="checkbox"/> 4 Key	
<input type="checkbox"/> 4 Key	Power Switch, Menu, Select (+,-),	
OSD Menu	Brightness, Contrast, H/V Position, Color, Phase, Clock...	
Optional	<input type="checkbox"/> AOT	

Specifications are subject to change without notice.

All brands or product names are trademarks or registered trademarks of their respective companies.

SSF= Resizing Panel+LED Driving Board

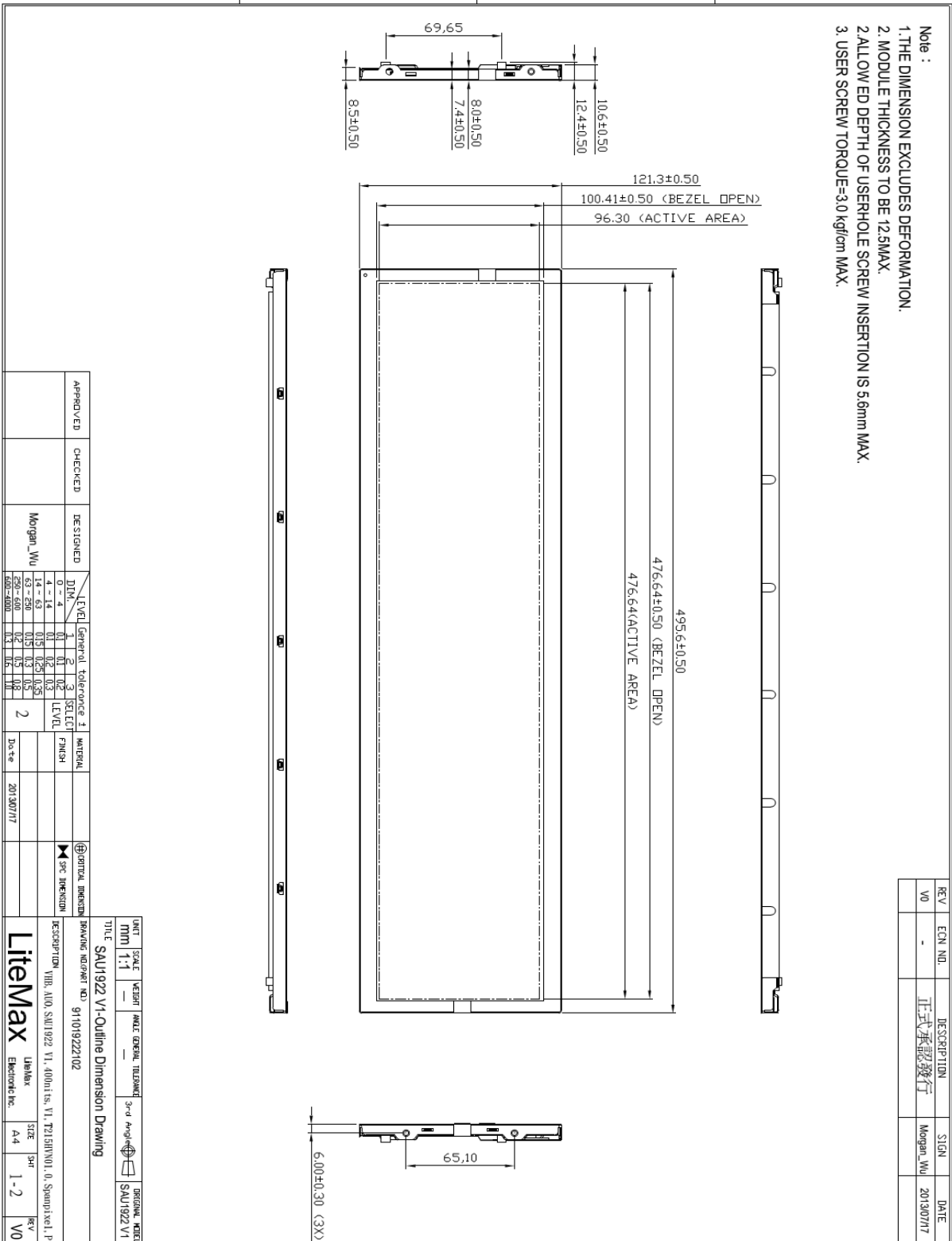
SSH= Resizing Panel+LED Driving Board+Control Board



Mechanical Drawing

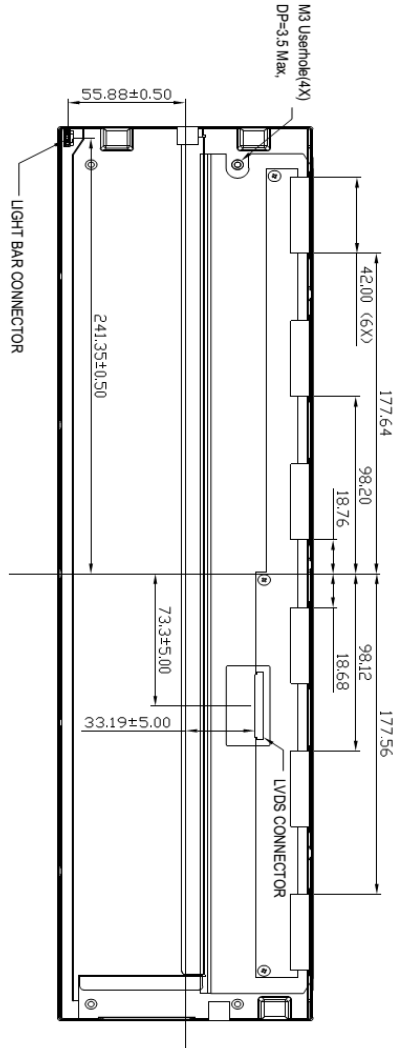
Outline Dimensions

Unit:mm





- Note :
1. THE DIMENSION EXCLUDES DEFORMATION.
 2. MODULE THICKNESS TO BE 12.5MAX.
 3. ALLOW ED DEPTH OF USERHOLE SCREW INSERTION IS 5.6mm MAX.
 3. USER SCREW TORQUE=3.0 kgf/cm MAX.



REV	EQ. NO.	DESCRIPTION	SIGN.	DATE
V0	-	正式承認發行	Morgan_Wu	2013/07/17

APPROVED	CHECKED	DESIGNED	LEVEL	General	Tolerance	±	SELECT	MATERIAL	FINISH	DATE
		Morgan_Wu	1	0 ~ 4	0.1	0.1	0.2			2013/07/17
			2	4 ~ 14	0.1	0.1	0.3			
			3	14 ~ 63	0.15	0.15	0.35			
			4	63 ~ 250	0.3	0.3	0.5			
			5	250 ~ 500	0.5	0.5	1.0			
			6	500 ~ 1000	1.0	1.0	2.0			

A4 297x210mm

UNIT	SCALE	WEIGHT	MODEL GENERAL	TOLERANCE	3rd Angle	ORIGINAL MODEL
MM	1:1	-	SAU1922 V1	SAU1922 V1	SAU1922 V1	SAU1922 V1

TITLE SAU1922 V1-Outline Dimension Drawing

DESCRIPTION VIB. AIO. SAU1922 V1, 400h1 t8, V1, T215HVOL. 0, Spand, xcl, P

Model Name: **LiteMax**
 Manufacturer: Emcore Inc.
 Size: A4
 Rev: 2-2
 Date: 2013/07/17

Ordering Information

Model Name	Description
------------	-------------



SSF1922-ENN-A11	19",400nits,1920*388,LID21A04.5 in 1,V2
SSH1922-ENN-G11	19",400nits,1920*388,LID21A04.AD2662GD,DC 12V,5 in 1,V2

Optional Accessories

Part Number	Description
840612051210	ADAPTER,AC/DC,12V/5.4A,65W,Atech OEM A065112-TDx,4P SLIDING CAP,P
810618301010	CABLE.POWER.AC.1830mm USA type
810618301090	CABLE.POWER.AC,1830mm Europe type
810618301050	CABLE.POWER.AC.1830mm UK type
810618301170	CABLE.POWER.AC,1830mm Australia type
810618301031	CABLE.POWER.AC.1830mm Japan type