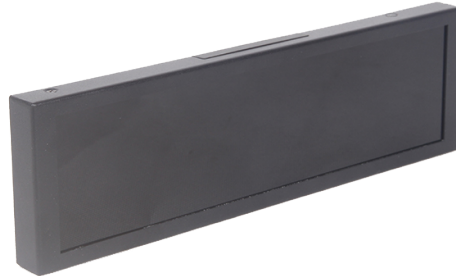


SVSH8W
8.8" ULTRA STRETCHED ANDROID LCD DISPLAY



FULL HD DEFINITION

Full HD resolution 1920x 480 ensures vivid, high-impact images and videos at the point of sale.



HIGHLY DURABLE SCREENS

Reliable commercial grade screens enable your shelf displays to run smoothly 24/7.



NARROW BEZEL

A sleek, narrow bezel is especially important when placing multiple screens together. The compact design also adds to the aesthetic and reduces strain on shelf edges.



NATIVE STRETCHED LCD

Non-resizing/cutting LCD Panel, so no Broken glass, fragile sealing, micro-cracks, light leakage.



IPS LCD PANEL

Commercial grade IPS panels guarantee incredible image quality and colour depth at an ultra-wide viewing angle.



OPT.: ANDROID PLAYER

Users can choose to integrated with Android player to update content via USB or CMS. You can also install any 3rd party CMS Software if required.

SPECIFICATIONS

Panel

Diagonal Size 8.8"	Resolution 1920 x 480	Brightness (Typ.) 600 nit	Contrast Ratio 800:1
Viewing Angle 170 / 170 (H/V)	Colors 16.7M, 72% NTSC	LED Life 30K hours	AA Area (mm) 218.88 x 54.72

Power

Type External	Power Supply AC 100 - 240V, 50/60Hz - DC 12V	Power Consumption 10W
-------------------------	--	---------------------------------

Mechanical

Outline Size (mm) 240.6 x 69.6 x 16	Weight 0.5 kg	Bracket x1
---	-------------------------	----------------------

Operation

Operation Temp. 0 - 40 °C	Humidity 10% - 80%
-------------------------------------	------------------------------

Built-in Android PC

CPU Quad-core Cortex A35	GPU Mali-G31 MP2	RAM 1GB	Internal Memory 8GB
USB USB 2.0 x 2	Network LAN, Wi-Fi	Bluetooth BT4.0	OS Android OS 8.1