



Maximize visibility, flexibility, and engagement with our all-in-one DV-LED totem solution

Freestanding DV-LED Totem

Benefit from the stunning visuals direct view LED provides with a versatile freestanding totem. Gone are the days when DV-LED had to be stuck to the wall. You have the chance to go bold with an eye-catching large scale viewing experience.

← Expand up to 7 seamless columns! →



All-in-One Packaged Solution

Combining Fine Pitch DV-LED cabinets and modules with a robust freestanding enclosure, our solution includes everything you need for a DV-LED totem display. Gain all of the benefits of DV-LED without any of the hassle.

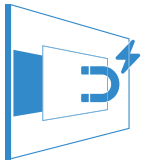


-  Internal Locker
-  Integrated Castors
-  Easy Front Serviceability
-  Protective Edge
-  No Bezel Totem
-  Stock Held in the UK
-  Effortless Assembly and Install
-  Silent Operation
-  3 Year Warranty
-  Lifetime UK-Based Support

Other Features

Effortless Installation & Maintenance

Installing these freestanding displays is a lot simpler than wall mounted counterparts. No matter what your level of experience with DV-LED solutions, installing and maintaining these displays couldn't be easier saving time and money.

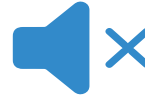


Quick and Easy Install



Ultra-Quiet Operation

These DV-LED totems do not require cooling fans due to their super low heat emissions. Not only does this allow them to run silently, which is especially important in indoor spaces, it also makes them more robust and reliable as there are no moving parts.



Small Footprint Totems

With a depth of 297mm our totem units don't take up valuable floorspace. This opens up more possibilities of where the totems can be placed. Even better the ultra slim DV-LED cabinets make the perceived depth of the units even smaller.



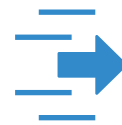
297mm Depth



Easy Manoeuvrability

Thanks to the integrated swivel castors, these displays offer a portable solution that can be moved around. This is particularly useful for businesses that may want to change the layout of their space frequently or for events and promotions that require temporary placement.

Integrated Castors



Protective Rear Enclosure

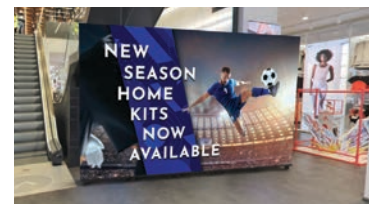
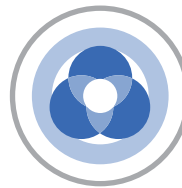
Our DV-LED freestanding totems look great from any angle for a full 360° experience. The rear of the totems has a glossy black finish and are neat in design, hiding any messy cables and fixtures inside the discrete internal locker.

Discrete Internal Locker



Captivating Image Quality

By utilising state-of-the-art SMD technology and advanced video processing, these displays really bring content to life by delivering crystal clarity and lifelike colours without any distortion. This is coupled with rapid refresh rates to ensure seamless content playback.



Update Content Remotely

Publish and monitor content from anywhere in the world via the internet using our own cloud-based CMS software, which is designed to be cost-effective and user-friendly. Plus, avoid the hassle associated with coordinating multiple suppliers by sourcing hardware and software from one place.



High Brightness Version Available

For our Freestanding DV-LED Totems we can offer two brightness options. One is a standard 550cd/m² that is perfect for commercial indoor spaces. We also offer a 2,200cd/m² variation that is optimised more for window displays



2,200cd/m² Brightness



FINE PITCH DV-LED



BEZEL-LESS TOTEM



ROBUST REAR ENCLOSURE



PROTECTIVE EDGE



INTERNAL LOCKER



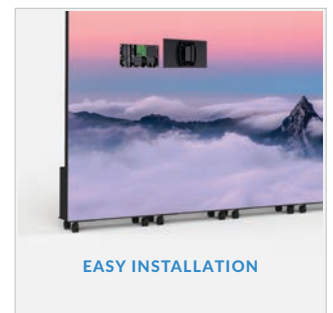
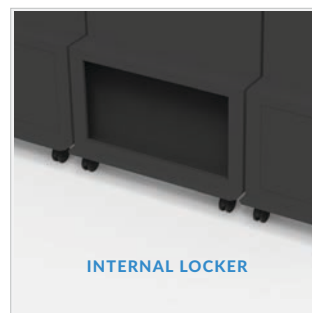
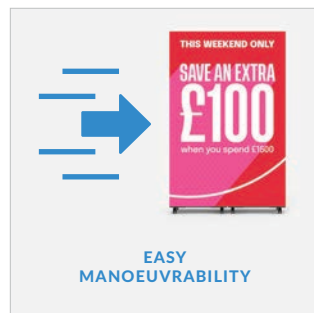
INTEGRATED CASTORS



FRONT SERVICEABILITY



AVAILABLE IN HIGH BRIGHTNESS



Specification Table

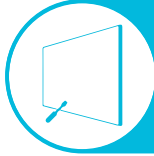
	Columns	1x	2x	3x	4x	5x	6x	7x
LED Display	Display Size	80"	91"	107"	126"	147"	169"	192"
	Display Area (WxHmm)	640x1920	1280x1920	1920x1920	2560x1920	3200x1920	3840x1920	4480x1920
	Resolution (px)	256x768	512x768	768x768	1024x768	1280x768	1536x768	1792x768
	Aspect Ratio	1:3	2:3	1:1	4:3	5:3	2:1	7:3
	Pixel Pitch (mm)	P2.5						
	LED Type	SMD2121						
	Pixel configuration	1R1G1B						
	Brightness (Calibrated)	550cd/m ² (2,200cd/m ² High Brightness Version Available)						
	Refresh rate	3840Hz						
	Contrast Ratio	6,500:1						
	Viewing Angle - Horizontal	170°						
	Viewing Angle - Vertical	170°						
	Processing	12 bit						
	Frame rate	60 fps						
	Maintenance	Front Service						
Mechanical	Unit Size (mm) (WxHxD)	640x2010x300	1280x2010x300	1920x2010x300	2560x2010x300	3200x2010x300	3840x2010x300	4480x2010x300
	Net Weight (kg)	83.3	166.6	249.9	333.2	416.5	499.8	583.1
Power	Input Voltage	AC220/110 ± 10%, 47~63Hz						
	Average Power Consumption (W)	144	276	408	540	672	804	936
Environmental	IP Rating	IP40						
	Operating Temperature	-10°C to +60°C						
	Operating Humidity	10% to 80%						
	Lifetime	100,000 hours						
Computer	Media Formats	Video (MPG, AVI, MP4, RM, RMVB, TS), Audio (MP3, WMA), Image (JPG, GIF, BMP, PNG)						
	Media Resolution	1920x1080/1080x1920						
	Internal Memory	32GB						
	CPU	Quad-Core Cortex-A17@1.61GHz						
	GPU	Mali-T760 MP4 @600MHz						
	RAM	4GB DDR3						
	USB	USB2.0 HOST (x4)						
	LAN	10/100Mb/s Ethernet						
	Wi-Fi	802.11b/g/n						
	OS	Android 7.1						
Package	Graphic Engine	OpenGL ES 1.1/2.0/3.0/3.1, OpenCL 1.1, Renderscript, Direct3D 11.1						
	Included	Totem Frame, DV-LED Cabinets, DV-LED Controller, PPCNET-D Media Player						
	Optional	TBC						
Warranty	Warranty Period	3 Year Warranty						
	Technical Support	Lifetime						

Why Choose Our Commercial Display Solutions?



Lifetime Technical Support

From the moment you receive your product, throughout the duration of your warranty and even after your warranty has expired we are here to support you. If you require any assistance setting up or using your product, or have any problems at all, we can provide free technical support via telephone and email.



On-site Support and Maintenance*

If needed, we can provide an installation service for any of our products. We can also set up service-level agreements for larger projects that require maintenance contracts.



Extended Warranty*

All of our commercial display products come with a 3 year commercial warranty as standard but if you want to extend this you can upgrade this to cover a 5 year period at point of purchase.



Training

As well as providing free remote CMS training sessions and webinars we can also visit you to deliver bespoke training for our software and hardware*.



Advanced Replacements†

Should your display suffer from any kind of hardware failure during the warranty period we will send you an advanced replacement and arrange for your old display to be collected, free of charge. This ensures no downtime where you are without a screen.



Custom Product Testing & Configuration

If you need us to test third party software or a website, or configure your screen in a particular way before it is dispatched (e.g. in a particular orientation or network mode), we can do so to make your life easier.



3D Rendering

Want to know how a particular screen will look once installed? Send us a photo of the location and we will create a 3D rendering of any screen in situ to help you to visualise how amazing it will look.



Logistics Support

We hold more stock in our UK warehouse than any other manufacturer so we can help you meet tight deadlines. For last minute orders we can also offer special express or morning delivery options*. We also carry out UK based quality control checks on every display before it leaves our warehouse.



Project Support

If you need to loan a sample unit to test we'd be more than happy to arrange this. We can also provide a rental service for temporary projects*.



Customisation*

Your display can be customised to suit your requirements by adding your logo or printed graphics or even tailoring the colour of a display. We can also carry out hardware modifications to existing products or manufacture bespoke solutions for special projects.



Extras*

As well as being able to provide accessories and add-ons, such as extra remote controls, NUC PCs and video wall controllers, we can also supply custom made flight cases which are great if a display needs to be moved safely from place to place.

†UK mainland only

*These particular services may incur additional charges